

affinity

ADVANCE

VETERINARY DIETS

Advanced Nutrition Guide





ADVANCE VETERINARY DIETS CANINE



ADVANCE VETERINARY DIETS FELINE



ADVANCE NUTRITIONAL SUPPLEMENTS



DOG CATALOGUE



Urate and xanthine stones

URINARY LOW PURINE

Cystine stones

URINARY LOW PURINE

Struvite stones

URINARY

Calcium oxalate stones

URINARY

RENAL

Fibre-responsive colitis

WEIGHT BALANCE

MINI 1-10 kg

WEIGHT BALANCE

MEDIUM-MAXI +10 kg

DIABETES

Atopic dermatitis

ATOPIC MINI

with **TROUT**

ATOPIC MEDIUM-MAXI

with **TROUT**

Diabetes Mellitus

WEIGHT BALANCE

MINI 1-10 kg

WEIGHT BALANCE

MEDIUM-MAXI +10 kg

DIABETES

Diarrhoea

GASTROENTERIC

Diarrhoea of the large intestine

DIABETES

Joint pain

ARTICULAR

REDUCED CALORIE

ARTICULAR

SENIOR + 7 YEARS

Inflammatory bowel disease

GASTROENTERIC

ATOPIC MINI

with **TROUT**

ATOPIC MEDIUM-MAXI

with **TROUT**

Enteritis

GASTROENTERIC

ATOPIC MINI

with **TROUT**

ATOPIC MEDIUM-MAXI

with **TROUT**



	WEIGHT BALANCE MINI 1-10 kg	Pancreatic exocrine insufficiency	GASTROENTERIC
Constipation	WEIGHT BALANCE MEDIUM-MAXI+10 kg		
	DIABETES	Renal insufficiency	RENAL
Gastritis	GASTROENTERIC	Leishmania without renal insufficiency	URINARY LOW PURINE
		Leishmania with renal insufficiency	RENAL
Hepatitis associated with encephalopathy	RENAL	Intestinal lymphangiectasia	GASTROENTERIC
Hepatitis not associated with encephalopathy	GASTROENTERIC	Lower urinary tract pathologies associated with struvite crystals	URINARY
	WEIGHT BALANCE MINI 1-10 kg	Maldigestion/ Malabsorption	GASTROENTERIC
	WEIGHT BALANCE MEDIUM-MAXI+10kg		
Hyperlipidaemia	GASTROENTERIC		WEIGHT BALANCE MINI 1-10 kg
		Obesity/Excessive body weight	WEIGHT BALANCE MEDIUM-MAXI+10kg
Hypertension	RENAL		DIABETES
Congestive heart failure	RENAL		ARTICULAR
		Osteoarthritis or EAD	ARTICULAR REDUCED CALORIE

ADVANCE
VETERINARY DIETS
WEIGHT BALANCE
MINI • 1-10 kg

INDICATIONS

- Obesity
- Diabetes mellitus in overweight dogs
- Hyperlipidaemia in overweight dogs
- Fibre-responsive colitis
- Constipation
- Hypothyroidism

CONTRAINDICATIONS

- Health problems associated with catabolic disorders



**85% OF DOGS
LOSE WEIGHT
in 2 months***



**30% REDUCTION
IN BODY FAT
in 2 months***



**L-CARNITINE
HELPS
BURN FAT**

FEATURES AND BENEFITS



*Clinical home study with small dogs. Internal data

INGREDIENTS

Dehydrated poultry protein, corn protein, pea fibre, barley, dehydrated peas, potato protein, corn meal, vegetable fibre, hydrolysed animal protein, animal fat (stabilised with natural mixed tocopherols), oat fibre, wheat protein, beetroot pulp, soy oil, fish oil, salt, potassium chloride, fructo-oligosaccharides, natural polyphenols.

DAILY RATION¹

	ADULT WEIGHT			
	2 kg	3 kg	5 kg	10 kg
	g/DAY			
Weight loss**	30-35 g	40-45 g	60-70 g	105-115 g
Weight control	50 g	65 g	95 g	160 g
Hyperlipidaemia	55 g	75 g	105 g	180 g

** Give very overweight dogs (> 20% excess body weight) or those with too little physical activity the smallest daily ration.

LOGISTICS DATA

CODE	UNIT/BOX	FORMAT	EAN
923526	8	1.5 kg	8410650235264

NUTRITIONAL ANALYSIS

	As supplied	Dry material
Moisture (%)	8.0	-
Protein (%)	34.0	37.0
Fat (%)	10.5	11.4
Crude fibre (%)	11.5	12.5
Soluble fibre** (%)	3.8	4.1
Insoluble fibre** (%)	20.4	22.2
Minerals (%)	7.5	8.2
Calcium (%)	1.0	1.1
Phosphorus (%)	0.9	1.0
Sodium (%)	0.50	0.54
Omega 3 (%)	0.33	0.36
Omega 6 (%)	2.00	2.17
Vitamin A* (IU)	30,000.0	32,608.7
Vitamin D ₃ * (IU)	2000.0	2173.9
Vitamin E* (mg)	600.0	652.2
Iron (mg)	230.0	250.0
Iodine* (mg)	1.4	1.5
Copper (mg)	19.0	20.7
Manganese (mg)	65.0	70.7
Zinc* (mg)	148.0	160.9
Selenium* (mg)	0.10	0.11
L-Carnitine	500.00	543.48
FOS (%)	0.30	0.33
Metabolisable energy (kcal)	2955.0	3250.0
Digestibility (%)	73	

(Units per kg of product)

*Added. **Calculated.



**KIBBLE ESPECIALLY DESIGNED
FOR MINI DOGS**

Less energy per ration

1. Consult your vet before use. The rations listed are indicative and may vary depending on factors such as age, breed, activity and weather conditions. Store in a cool, dry place. Ensure the animal has access to clean, fresh water at all times.

ADVANCE
VETERINARY DIETS
WEIGHT BALANCE
MEDIUM-MAXI+10 kg

INDICATIONS

- Obesity
- Diabetes mellitus in overweight dogs
- Hyperlipidaemia in overweight dogs
- Fibre-responsive colitis
- Constipation
- Hypothyroidism

CONTRAINDICATIONS

- Health problems associated with catabolic disorders



**94% OF DOGS
LOSE WEIGHT
in 2 months***



**44% REDUCTION
IN BODY FAT
in 3 months***



**L-CARNITINE
HELPS
BURN FAT**

FEATURES AND BENEFITS



*Clinical home study with medium and large dogs. Internal data

ADVANCE
VETERINARY DIETS

WEIGHT BALANCE
MEDIUM-MAXI+10 kg

INGREDIENTS

Dehydrated poultry protein, corn protein, pea fibre, barley, dehydrated peas, potato protein, corn meal, vegetable fibre, hydrolysed animal protein, animal fat (stabilised with natural mixed tocopherols), oat fibre, wheat protein, beetroot pulp, soy oil, fish oil, salt, potassium chloride, fructo-oligosaccharides, natural polyphenols.

DAILY RATION¹

	ADULT WEIGHT				
	10 kg	20 kg	30 kg	40 kg	50 kg
	g/DAY				
Weight loss	105-115 g	175-195 g	240-265 g	295-330 g	350-390 g
Weight control	160 g	270 g	370 g	460 g	540 g
Hyperlipidaemia	180 g	305 g	410 g	510 g	605 g

** Give very overweight dogs (> 20% excess body weight) or those with too little physical activity the smallest daily ration.

LOGISTICS DATA

CODE	UNIT/BOX	FORMAT	EAN
923528	5	3 kg	8410650152301
923538	1	12 kg	8410650168111
923763	1	15 kg	8410650237633

NUTRITIONAL ANALYSIS

	As supplied	Dry material
Moisture (%)	8.0	-
Protein (%)	34.0	37.0
Fat (%)	10.5	11.4
Crude fibre (%)	11.5	12.5
Soluble fibre** (%)	3.8	4.1
Insoluble fibre** (%)	20.4	22.2
Minerals (%)	7.5	8.2
Calcium (%)	1.0	1.1
Phosphorus (%)	0.9	1.0
Sodium (%)	0.50	0.54
Omega 3 (%)	0.33	0.36
Omega 6 (%)	2.00	2.17
Vitamin A* (IU)	30,000.0	32,608.7
Vitamin D ₃ * (IU)	2000.0	2173.9
Vitamin E* (mg)	600.0	652.2
Iron (mg)	230.0	250.0
Iodine* (mg)	1.4	1.5
Copper (mg)	19.0	20.7
Manganese (mg)	65.0	70.7
Zinc* (mg)	148.0	160.9
Selenium* (mg)	0.10	0.11
L-Carnitine	500.00	543.48
FOS (%)	0.30	0.33
Metabolisable energy (kcal)	2955.0	3250.0
Digestibility (%)	73	

(Units per kg of product)

*Added. **Calculated.



**KIBBLE ESPECIALLY DESIGNED
FOR MEDIUM-LARGE DOGS**

Less energy per ration

1. Consult your vet before use. The rations listed are indicative and may vary depending on factors such as age, breed, activity and weather conditions. Store in a cool, dry place. Ensure the animal has access to clean, fresh water at all times.

ADVANCE
VETERINARY DIETS

ATOPIC
MINI

with **TROUT**

INDICATIONS

- Atopic dermatitis
- Adverse reactions to food in dogs with atopic dermatitis
- Chronic itching
- Intestinal problems with itching
- Allergic otitis externa
- Enteritis
- Inflammatory bowel disease
- Other inflammatory skin conditions

CONTRAINDICATIONS

- Hypersensitivity or intolerance to any of the ingredients
- Hyperlipidaemia
- Pancreatitis



**REDUCES
ITCHINESS**



**RESTORES THE
SKIN BARRIER**



**CONTROLS
ATOPIC FLARE-UPS**

FEATURES AND BENEFITS

affinity

ADVANCE

VETERINARY DIETS

ATOPIC

MINI

with TROUT

INGREDIENTS

Corn, trout (18%), rice, corn protein, dehydrated trout protein (8%), animal fat (stabilised with natural mixed tocopherols), potato protein (4%), hydrolysed animal protein, beetroot pulp, hydrolysed collagen (2.6%), yeast, fish oil, vegetable fibre, soy oil, monocalcium phosphate, calcium carbonate, potassium chloride, salt, olive leaf extract (0.05%), aloe vera (50 mg/kg). Protein sources: corn, trout, potato and yeast.

DAILY RATION¹

WEIGHT	g/DAY
1 kg	25 g
3 kg	55 g
5 kg	80 g
10 kg	135 g

LOGISTICS DATA

CODE	UNIT/BOX	FORMAT	EAN
922121	8	1.5 kg	8410650221212

NUTRITIONAL ANALYSIS

	As supplied	Dry material
Moisture (%)	8.0	-
Protein (%)	26.0	28.3
Fat(%)	18.0	19.6
Crude fibre (%)	3.0	3.3
Minerals (%)	7.0	7.6
Calcium (%)	1.1	1.2
Phosphorus (%)	0.9	1.0
Sodium (%)	0.30	0.33
Omega 3 (%)	1.20	1.30
Omega 6 (%)	3.00	3.26
EPA (%)	0.35	0.38
DHA (%)	0.65	0.71
Vitamin A* (IU)	27,000.0	29,347.8
Vitamin D ₃ * (IU)	1800.0	1956.5
Vitamin E* (mg)	450.0	489.1
Vitamin C* (mg)	350.0	380.4
Iron (mg)	184.0	200.0
Iodine* (mg)	1.4	1.5
Copper (mg)	16.0	17.4
Manganese (mg)	54.0	58.7
Zinc* (mg)	148.0	160.9
Selenium* (mg)	0.10	0.11
Metabolisable energy (kcal)	3930.0	4272.0
Digestibility (%)	82	

(Units per kg of product)

*Added.



**KIBBLE ESPECIALLY DESIGNED
FOR MINI DOGS**

1. Consult your vet before use. The rations listed are indicative and may vary depending on factors such as age, breed, activity and weather conditions. Store in a cool, dry place. Ensure the animal has access to clean, fresh water at all times.

affinity

ADVANCE

VETERINARY DIETS

ATOPIC

MEDIUM-MAXI

with TROUT

INDICATIONS

- Atopic dermatitis
- Adverse reactions to food in dogs with atopic dermatitis
- Chronic itching
- Intestinal problems with itching
- Allergic otitis externa
- Enteritis
- Inflammatory bowel disease
- Other inflammatory skin conditions

CONTRAINDICATIONS

- Hypersensitivity or intolerance to any of the ingredients
- Hyperlipidaemia
- Pancreatitis



**REDUCES
ITCHINESS**



**RESTORES THE
SKIN BARRIER**



**CONTROLS
ATOPIC FLARE-UPS**

FEATURES AND BENEFITS

OMEGA 3 & 6 AND OLIVE OIL EXTRACT

Help reduce inflammation and maintain healthy skin.

Ω-3 ESSENTIAL FATTY ACIDS (EPA AND DHA)

Helps reduce inflammation and the clinical signs of atopic dermatitis.

TROUT AND POTATO

Reduce the risk of adverse food reactions.

LINOLEIC ACID (Ω-6)

Reduces the transepidermal water loss responsible for xerosis and improves the appearance of the skin and coat.

ALOE VERA

Helps repair and maintain skin hydration.

ZINC AND YEASTS

Help restore the skin, coat and protective barrier function.

COLLAGEN PEPTIDES

Help improve healing.



ADVANCE
VETERINARY DIETS

ATOPIC
MEDIUM-MAXI
with TROUT

INGREDIENTS

Corn, trout (17%), rice, corn protein, dehydrated trout protein (7%), animal fat (stabilised with natural mixed tocopherols), potato protein (4%), beetroot pulp, hydrolysed animal protein, hydrolysed collagen (2.6%), yeast, fish oil, vegetable fibre, soy oil, monocalcium phosphate, calcium carbonate, potassium chloride, salt, olive leaf extract (0.05%), aloe vera (50 mg/kg). Protein sources: corn, trout, potato and yeast.

DAILY RATION¹

WEIGHT	g/DAY
1 kg	25 g
5 kg	85 g
10 kg	140 g
20 kg	235 g
30 kg	315 g
40 kg	395 g
50 kg	465 g

LOGISTICS DATA

CODE	UNIT/BOX	FORMAT	EAN
529310	5	3 kg	8410650170695
923676	1	12 kg	8410650170718
923762	1	15 kg	8410650237626

NUTRITIONAL ANALYSIS

	As supplied	Dry material
Moisture (%)	8.0	-
Protein (%)	25.0	27.2
Fat (%)	17.0	18.5
Crude fibre (%)	3.0	3.3
Minerals (%)	7.0	7.6
Calcium (%)	1.1	1.2
Phosphorus (%)	0.9	1.0
Sodium (%)	0.31	0.34
Omega 3 (%)	1.37	1.49
Omega 6 (%)	3.04	3.30
EPA (%)	0.35	0.38
DHA (%)	0.65	0.71
Vitamin A* (IU)	27,000.0	29,347.8
Vitamin D ₃ * (IU)	1800.0	1956.5
Vitamin E* (mg)	450.0	489.1
Vitamin C* (mg)	350.0	380.4
Iron (mg)	179.0	194.6
Iodine* (mg)	1.4	1.5
Copper (mg)	16.0	17.4
Manganese (mg)	56.0	60.9
Zinc* (mg)	148.0	160.9
Selenium* (mg)	0.10	0.1
Metabolisable energy (kcal)	3882.0	4218.0
Digestibility (%)	82	

(Units per kg of product)

*Added.



**KIBBLE ESPECIALLY DESIGNED
FOR MEDIUM-LARGE DOGS**

1. Consult your vet before use. The rations listed are indicative and may vary depending on factors such as age, breed, activity and weather conditions. Store in a cool, dry place. Ensure the animal has access to clean, fresh water at all times.

ADVANCE
VETERINARY DIETS
ARTICULAR
REDUCED CALORIE

INDICATIONS

- Nutritional support for overweight dogs with diseases coursing with inflammation and joint pain
- Support for joint health after surgery or trauma
- Nutritional support for osteoarthritis and its preventive treatment

CONTRAINDICATIONS

- Not recommended for puppies
- Not recommended for pregnant or lactating females



WEIGHT REDUCTION



JOINT MOBILITY AND CARTILAGE CARE



BONE PROTECTION

FEATURES AND BENEFITS



ADVANCE
VETERINARY DIETS

ARTICULAR

REDUCED CALORIE

INGREDIENTS

Chicken, wheat, corn, dehydrated tuna protein, rice, wheat meal, dehydrated animal protein, corn gluten meal, pea fibre, hydrolysed animal protein, animal fat (stabilised with natural mixed tocopherols), beetroot pulp, hydrolysed collagen (3%), fish oil (source of EPA), corn, vegetable fibre, yeast, potassium chloride, salt, glucosamine (650 mg/kg), chondroitin sulphate (450 mg/kg), hyaluronic acid (30 mg/kg).

DAILY RATION¹

ADULT WEIGHT	MAINTENANCE g/DAY	WEIGHT LOSS g/DAY
1 kg	25 g	20 g
5 kg	80 g	70 g
10 kg	135 g	120 g
15 kg	180 g	160 g
20 kg	225 g	200 g
30 kg	305 g	270 g
40 kg	380 g	340 g
50 kg	445 g	400 g
60 kg	510 g	460 g
70 kg	575 g	515 g

LOGISTICS DATA

CODE	UNIT/BOX	FORMAT	EAN
920645	5	3 kg	8410650206455
923674	1	12 kg	8410650206448

NUTRITIONAL ANALYSIS

	As supplied	Dry material
Moisture (%)	8.0	-
Protein (%)	28.0	30.4
Fat (%)	12.5	13.6
Crude fibre (%)	6.0	6.5
Soluble fibre** (%)	1.7	1.8
Insoluble fibre** (%)	10.0	10.9
Minerals (%)	6.5	7.1
Calcium (%)	1.1	1.2
Phosphorus (%)	0.9	1.0
Sodium (%)	0.39	0.42
Omega 3 (%)	0.70	0.76
Omega 6 (%)	1.90	2.07
Vitamin A* (IU)	27,000.0	29,347.8
Vitamin D ₃ * (IU)	1800.0	1956.5
Vitamin E* (mg)	700.0	760.9
Vitamin C* (mg)	500.0	543.5
Iron (mg)	222.0	241.3
Iodine* (mg)	1.4	1.5
Copper (mg)	17.0	18.5
Manganese (mg)	60.0	65.2
Zinc* (mg)	148.0	160.9
Selenium* (mg)	0.10	0.11
Hyaluronic acid (mg)	30.0	32.6
Glucosamine (mg)	650.0	706.5
Chondroitin sulphate (mg)	450.0	489.1
Hydrolysed collagen (%)	3.0	3.3
Metabolisable energy (kcal)	3490.0	3792.0
Digestibility (%)	81	

(Units per kg of product)

*Added. **Calculated.



1. Consult your vet before use. The rations listed are indicative and may vary depending on factors such as age, breed, activity and weather conditions. Store in a cool, dry place. Ensure the animal has access to clean, fresh water at all times.

affinity
ADVANCE
VETERINARY DIETS
GASTROENTERIC

INDICATIONS

- Enteritis, gastritis
- Diarrhoea
- Pancreatitis
- Pancreatic exocrine insufficiency
- Hyperlipidaemia
- Inflammatory bowel disease
- Maldigestion/malabsorption
- Intestinal lymphangiectasia
- Hepatitis without encephalopathy

CONTRAINDICATIONS

- None reported



**INTESTINAL
PROTECTION**

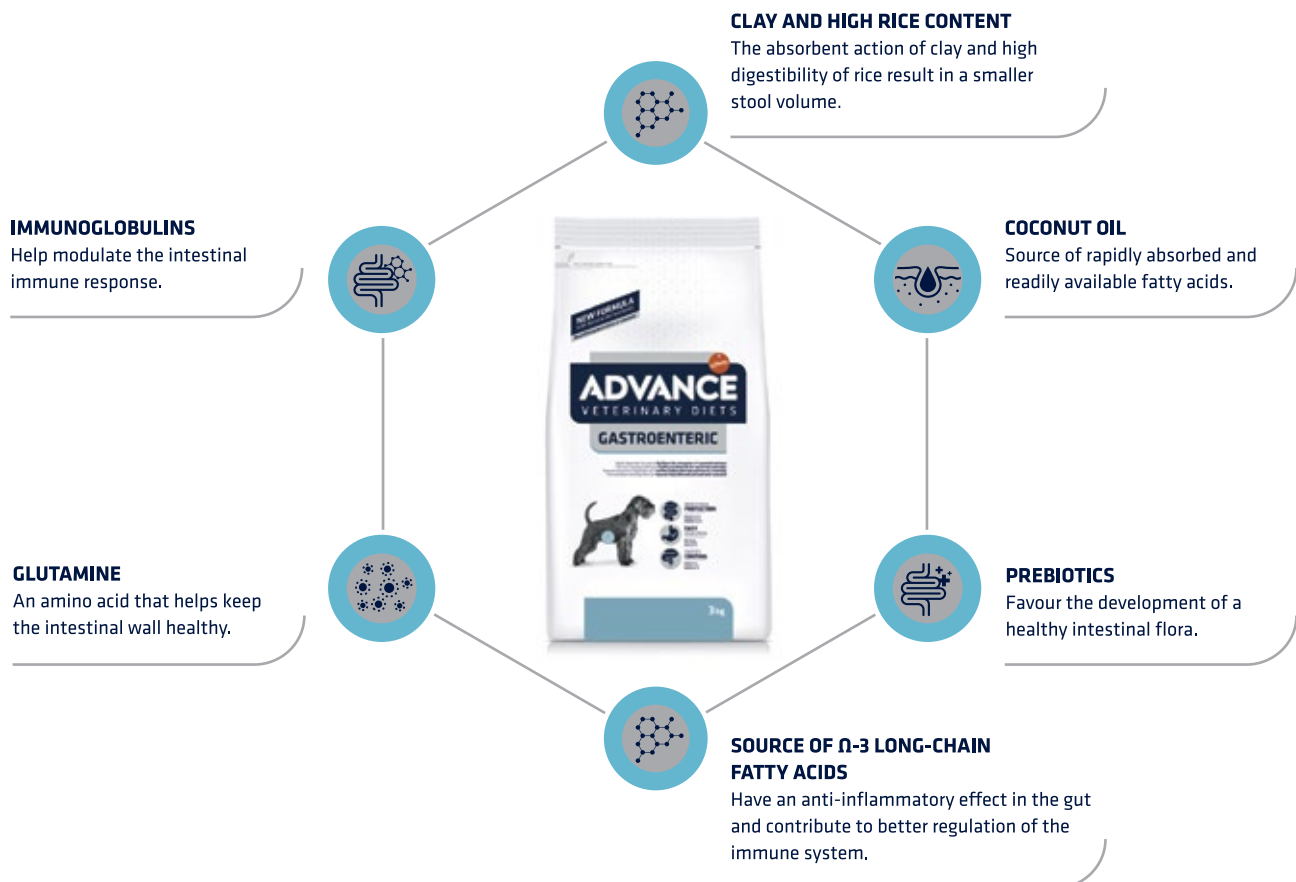


**EASILY
DIGESTED**



**STOOL
CONTROL**

FEATURES AND BENEFITS



affinity

ADVANCE

VETERINARY DIETS

GASTROENTERIC

INGREDIENTS

Rice, corn, corn gluten meal, dehydrated poultry protein, coconut oil (4%), animal fat (stabilised with natural mixed tocopherols), hydrolysed animal protein, hydrolysed soy protein, plasma proteins (natural source of immunoglobulins) (1.4%), calcium carbonate, monocalcium phosphate, yeast, potassium chloride, fish oil, fructo-oligosaccharides (0.4%), vegetable fibre.

DAILY RATION¹

	ADULT WEIGHT						
	1 kg	5 kg	10 kg	20 kg	30 kg	40 kg	50 kg
	g/DAY						
2-6 months	35 g	120 g	210 g	345 g	450 g	530 g	630 g
6-12 months	30 g	110 g	180 g	300 g	450 g	545 g	650 g
Adult	25 g	85 g	140 g	240 g	325 g	400 g	475 g

LOGISTICS DATA

CODE	UNIT/BOX	FORMAT	EAN
586810	8	0.8 kg	8410650168265
586311	5	3 kg	8410650152264
924359	1	12 kg	8410650167817

NUTRITIONAL ANALYSIS

	As supplied	Dry material
Moisture (%)	8.0	-
Protein (%)	25.5	27.7
Fat (%)	12.8	13.9
Crude fibre (%)	1.3	1.4
Minerals (%)	7.0	7.6
Calcium (%)	1.1	1.2
Phosphorus (%)	0.9	1.0
Sodium (%)	0.35	0.38
Potassium (%)	0.70	0.76
Omega 3 (%)	0.19	0.21
Omega 6 (%)	1.87	2.03
Glutamic acid (%)	4.6	5.0
Vitamin A* (IU)	27,000.0	29,347.8
Vitamin D ₃ * (IU)	1800.0	1956.5
Vitamin E* (mg)	475.0	516.3
Vitamin C* (mg)	400.0	434.8
Iron (mg)	156.0	169.6
Iodine* (mg)	1.6	1.7
Copper (mg)	16.0	17.4
Manganese (mg)	56.0	60.9
Zinc* (mg)	148.0	160.9
Selenium* (mg)	0.12	0.13
FOS (%)	0.40	0.43
Metabolisable energy (kcal)	3815.0	4145.0
Digestibility (%)	84	

(Units per kg of product)

*Added.



1. Consult your vet before use. The rations listed are indicative and may vary depending on factors such as age, breed, activity and weather conditions. Store in a cool, dry place. Ensure the animal has access to clean, fresh water at all times.

affinity

ADVANCE

VETERINARY DIETS

DIABETES

INDICATIONS

- Diabetes mellitus
- Constipation
- Fibre-responsive colitis
- Large intestine diarrhoea
- Dogs prone to obesity
- Dogs with a history of recurrent struvite stones

CONTRAINDICATIONS

- Health problems associated with catabolic disorders



GLUCOSE CONTROL



FIRM STOOLS



LOW IN CALORIES TO CONTROL WEIGHT

FEATURES AND BENEFITS

NATURAL ANTIOXIDANTS
Mitigate oxidative cell damage.



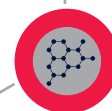
SOLUBLE FIBRE
Helps regulate intestinal transit and stimulates beneficial intestinal flora.



COMPLEX CARBOHYDRATES FROM BARLEY
Help regulate blood glucose.



REDUCED FAT AND CALORIE CONTENT
Helps maintain an optimal body condition by reducing fat accumulation and excess weight.



affinity

ADVANCE

VETERINARY DIETS

DIABETES

INGREDIENTS

Corn, dehydrated poultry protein, beetroot pulp, corn protein, barley, animal fat (stabilised with natural mixed tocopherols), pea fibre, hydrolysed animal protein, monocalcium phosphate, potassium chloride, fish oil, salt. Carbohydrate sources: corn and barley.

DAILY RATION¹

ADULT WEIGHT	g/DAY
1 kg	30 g
5 kg	95 g
10 kg	155 g
15 kg	215 g
20 kg	265 g
30 kg	360 g
40 kg	445 g
50 kg	525 g
60 kg	600 g
70 kg	675 g

LOGISTICS DATA

CODE	UNIT/BOX	FORMAT	EAN
590311	5	3 kg	8410650152349
923677	1	12 kg	8410650168098

NUTRITIONAL ANALYSIS

	As supplied	Dry material
Moisture (%)	8.0	-
Protein (%)	23.0	25.0
Fat (%)	12.0	13.0
Crude fibre (%)	6.5	7.1
Soluble fibre** (%)	4.6	5.0
Insoluble fibre** (%)	14.7	16.0
Minerals (%)	7.0	7.6
Calcium (%)	1.2	1.3
Phosphorus (%)	0.9	1.0
Sodium (%)	0.33	0.36
Omega 3 (%)	0.20	0.22
Omega 6 (%)	2.30	2.50
Starch (%)	28.50	30.98
Total sugars (%)	1.80	1.96
Vitamin A* (IU)	27,000.0	29,347.8
Vitamin D ₃ * (IU)	1800.0	1956.5
Vitamin E* (mg)	315.0	342.4
Iron (mg)	273.0	296.7
Iodine* (mg)	1.6	1.7
Copper (mg)	18.0	19.6
Manganese (mg)	59.0	64.1
Zinc* (mg)	148.0	160.9
Selenium* (mg)	0.12	0.13
Metabolisable energy (kcal)	3400.0	3695.0
Digestibility (%)	71	

(Units per kg of product)

*Added. **Calculated.



1. Consult your vet before use. The rations listed are indicative and may vary depending on factors such as age, breed, activity and weather conditions. Store in a cool, dry place. Ensure the animal has access to clean, fresh water at all times.

affinity

ADVANCE

VETERINARY DIETS

RENAL

INDICATIONS

- Kidney failure
- Chronic kidney disease (CKD)
- Calcium oxalate urolithiasis
- Cystine crystals
- Urate crystals
- Early signs of congestive heart failure
- Hepatic encephalopathy
- Hypertension

CONTRAINDICATIONS

- Health problems requiring a high protein or phosphorus intake



**CONTROLS
ACIDOSIS**



**GLOMERULAR
PROTECTION**



**REDUCES RENAL
WORKLOAD**

FEATURES AND BENEFITS



affinity

ADVANCE

VETERINARY DIETS

RENAL

INGREDIENTS

Corn, rice, animal fat (stabilised with natural mixed tocopherols), dehydrated egg, corn protein, hydrolysed animal protein, various sugars, beetroot pulp, fish oil, vegetable fibre, calcium carbonate, dehydrated whey, caseinate, purified vegetable fibre, inulin, potassium citrate, potassium chloride, salt, magnesium oxide. Protein sources: Dehydrated egg, corn protein, hydrolysed animal protein, sodium caseinate and dehydrated whey.

DAILY RATION¹

ADULT WEIGHT	IDEAL WEIGHT g/DAY
1 kg	30 g
3 kg	65 g
5 kg	95 g
10 kg	165 g
15 kg	220 g
20 kg	275 g
25 kg	325 g
30 kg	370 g
35 kg	415 g
40 kg	460 g
45 kg	505 g
50 kg	545 g
55 kg	585 g
60 kg	625 g
65 kg	660 g
70 kg	700 g

LOGISTICS DATA

CODE	UNIT/BOX	FORMAT	EAN
587311	5	3 kg	8410650152288
500824	1	12 kg	8410650168128

NUTRITIONAL ANALYSIS

	As supplied	Dry material
Moisture (%)	8.0	-
Protein (%)	14.5	15.8
Fat (%)	17.5	19.0
Crude fibre (%)	3.0	3.3
Minerals (%)	4.5	4.9
Calcium (%)	0.8	0.9
Phosphorus (%)	0.3	0.3
Sodium (%)	0.60	0.65
Potassium (%)	0.25	0.27
Omega 3 (%)	0.50	0.54
Omega 6 (%)	2.80	3.04
Vitamin A* (IU)	27,000.0	29,347.8
Vitamin D ₃ * (IU)	1800.0	1956.5
Vitamin E* (mg)	600.0	652.2
Iron (mg)	150.0	163.0
Iodine* (mg)	1.6	1.7
Copper (mg)	15.0	16.3
Manganese (mg)	55.0	59.8
Zinc* (mg)	148.0	160.9
Selenium* (mg)	0.12	0.13
L-Carnitine (mg)	250	271.7
Metabolisable energy (kcal)	3960.0	4297.0
Digestibility (%)	84	

(Units per kg of product)

*Added.



1. Consult your vet before use. The rations listed are indicative and may vary depending on factors such as age, breed, activity and weather conditions. Store in a cool, dry place. Ensure the animal has access to clean, fresh water at all times.

affinity

ADVANCE

VETERINARY DIETS

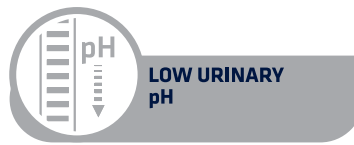
URINARY

INDICATIONS

- Dissolution of struvite stones
- Reduction of struvite and calcium oxalate stone recurrence

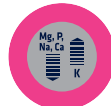
CONTRAINDICATIONS

- Growing puppies
- Pregnancy/lactation
- State of acidosis
- Use of urine acidifiers



FEATURES AND BENEFITS

CONTROLLED MINERAL LEVELS
to help reduce urine saturation (relative supersaturation, RSS) and the risk of stone formation.



LOW URINARY pH
to help dissolve struvite stones and prevent their recurrence.



REDUCED PROTEIN CONTENT
to restrict the growth of bacteria that use urea from protein.



GREAT TASTE
for a long-term everyday diet.



affinity

ADVANCE

VETERINARY DIETS

URINARY

INGREDIENTS

Corn, rice, dehydrated poultry protein, corn protein, wheat, animal fat, corn meal, hydrolysed animal protein, dehydrated egg, beetroot pulp, potassium chloride, fish oil, calcium sulphate, potassium citrate, salt.

DAILY RATION¹

ADULT WEIGHT	IDEAL WEIGHT g/DAY
1 kg	25 g
5 kg	80 g
10 kg	140 g
20 kg	235 g
30 kg	315 g
40 kg	390 g
50 kg	465 g

LOGISTICS DATA

CODE	UNIT/BOX	FORMAT	EAN
962113	1	3 kg	8410650152325
962114	1	12 kg	8410650168104



NUTRITIONAL ANALYSIS

	As supplied	Dry material
Moisture (%)	8.0	-
Protein (%)	22.0	23.9
Fat (%)	14.0	15.2
Crude fibre (%)	2.0	2.2
Minerals (%)	5.5	6.0
Calcium (%)	0.70	0.76
Phosphorus (%)	0.60	0.65
Sodium (%)	0.25	0.27
Potassium (%)	0.75	0.82
Magnesium (%)	0.08	0.09
Chloride (%)	0.75	0.82
Sulphur (%)	0.37	0.40
Omega 3 (%)	0.30	0.33
Omega 6 (%)	2.60	2.83
Taurine* (%)	0.10	0.11
Vitamin A* (IU)	27,000.0	29,347.8
Vitamin D ₃ * (IU)	1200.0	1304.3
Vitamin E* (mg)	315.0	342.4
Iron* (mg)	86.0	93.5
Iodine* (mg)	1.4	1.5
Copper (mg)	8.8	9.6
Manganese* (mg)	40.0	43.5
Zinc* (mg)	148.0	160.9
Selenium* (mg)	0.10	0.11
Metabolisable energy (kcal)	3860.0	4190.0
Digestibility (%)	85	

(Units per kg of product)

*Added.

1. Consult your vet before use. The rations listed are indicative and may vary depending on factors such as age, breed, activity and weather conditions. Store in a cool, dry place. Ensure the animal has access to clean, fresh water at all times.

CAT CATALOGUE



	URINARY	Diarrhoea	GASTROENTERIC
Struvite stones	URINARY STRESS	Enteritis	GASTROENTERIC SENSITIVE
	URINARY STERILIZED - LOW CALORIE		
	URINARY	Constipation	WEIGHT BALANCE SENSITIVE
Calcium oxalate stones	URINARY STRESS	Hepatic encephalopathy	RENAL
	URINARY STERILIZED - LOW CALORIE	Hyperlipidaemia	WEIGHT BALANCE
	RENAL		
Urate and cystine stones	RENAL	Hypertension	RENAL
	URINARY		
Idiopathic cystitis	URINARY STRESS		
	URINARY STERILIZED - LOW CALORIE		
Fibre-responsive colitis	WEIGHT BALANCE		
Diabetes mellitus	WEIGHT BALANCE		

ADVANCE
VETERINARY DIETS
WEIGHT BALANCE

INDICATIONS

- Overweight and obesity
- Diabetes mellitus in overweight cats
- Fibre-responsive colitis
- Constipation
- Hyperlipidaemia

CONTRAINDICATIONS

- Health problems associated with catabolic disorders



83% OF CATS LOSE WEIGHT in 3 months*



HIGH FIBRE CONTENT: SATIATING EFFECT



23% REDUCTION IN BODY FAT in 3 months*

FEATURES AND BENEFITS



*Clinical study. Internal data.

ADVANCE
VETERINARY DIETS
WEIGHT BALANCE

INGREDIENTS

Corn protein, dehydrated poultry protein, corn, vegetable fibre, wheat, wheat protein, potato protein, barley, dehydrated pork protein, pea fibre, hydrolysed animal protein, animal fat (stabilised with natural mixed tocopherols), beetroot pulp, potassium chloride, salt, calcium carbonate, fish oil, flax seeds, olive oil, natural polyphenols.

DAILY RATION¹

Current weight	Weight loss	Maintenance	
	Initial serving	Weight control	Hyperlipidaemia
2 kg	35-40 g	45 g	50 g
3 kg	42-48 g	55 g	65 g
4 kg	48-52 g	60 g	75 g
5 kg	52-58 g	65 g	90 g
6 kg	56-62 g	70 g	100 g
7 kg	60-66 g	75 g	110 g
8 kg	62-70 g	80 g	120 g
9 kg	66-74 g	85 g	130 g
10 kg	68-76 g	90 g	140 g

*Give very overweight cats (> 20% excess body weight) or those with too little physical activity the smallest daily ration.

LOGISTICS DATA

CODE	UNIT/BOX	FORMAT	EAN
923913	8	1.5 kg	8410650239132
923938	5	3 kg	8410650239385
923916	1	8 kg	8410650239163

NUTRITIONAL ANALYSIS

	As supplied	Dry material
Moisture (%)	8.0	-
Protein (%)	40.0	43.5
Fat (%)	9.0	9.8
Crude fibre (%)	10.0	10.9
Crude ash (%)	7.0	7.61
Calcium (%)	1.20	1.30
Phosphorus (%)	1.00	1.09
Sodium (%)	0.60	0.65
Potassium (%)	0.90	0.98
Magnesium (%)	0.09	0.10
Omega 6 (%)	1.70	1.85
Omega 3 (%)	0.30	0.33
Starch (%)	17.0	18.5
Taurine (%)	0.30	0.33
Vitamin A* (IU)	30,000.0	32,608.7
Vitamin D ₃ * (IU)	2000.0	2173.9
Vitamin E* (mg)	660.0	717.4
Biotin* (mg)	1.00	1.09
L-Carnitine* (mg)	500.0	543.5
Zinc* (mg)	148.0	160.9
Metabolisable energy (kcal)	3295.0	3581.5
Digestibility (%)	73	

(Units per kg of product)

*Added.



1. Consult your vet before use. The rations listed are indicative and may vary depending on factors such as age, breed, activity and weather conditions. Store in a cool, dry place. Ensure the animal has access to clean, fresh water at all times.

affinity

ADVANCE

VETERINARY DIETS

GASTROENTERIC

SENSITIVE

INDICATIONS

- Enteritis, gastritis and pancreatitis
- Acute and chronic diarrhoea
- Vomiting
- Poor digestion/poor absorption
- Intolerances to ingredients or nutrients
- Pancreatic exocrine insufficiency
- Inflammatory bowel disease
- Intestinal lymphangiectasia
- Intestinal bacteria overgrowth

CONTRAINDICATIONS

- Hepatic encephalopathy



INTESTINAL
PROTECTION AND
EASY TO DIGEST



STOOL
CONTROL



REDUCES THE RISK OF
FOOD INTOLERANCES

FEATURES AND BENEFITS



affinity

ADVANCE

VETERINARY DIETS

GASTROENTERIC

SENSITIVE

INGREDIENTS

Rice (34%), dehydrated turkey proteins (16%), pea protein (12%), hydrolysed animal proteins, fat of animal origin, dehydrated peas (5%), hydrolysed soy protein, yeast, fish oil, coconut oil, vegetable fibre, potassium chloride, fructo-oligosaccharides (0.5%). **Sources of highly digestible ingredients:** rice, dehydrated turkey proteins, coconut oil. **Main sources of proteins:** dehydrated turkey proteins, pea protein, hydrolysed animal proteins, hydrolysed soy protein.

DAILY RATION¹

ADULT WEIGHT	g/DAY
2-4 kg	40-65 g
4-6 kg	65-85 g
6-8 kg	85-105 g

LOGISTICS DATA

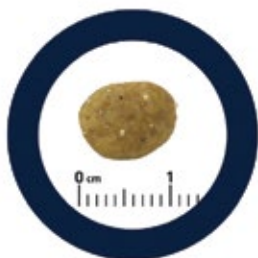
CODE	UNITS/BOX	SIZE	EAN
921503	8	1.5 kg	8410650215037

NUTRITIONAL ANALYSIS

	Quantity	Dry matter
Moisture (%)	6.5	-
Protein (%)	35.0	37.4
Fat (%)	13.0	13.9
Crude fibre (%)	2.0	2.1
Minerals (%)	8.0	8.6
Calcium (%)	1.40	1.50
Phosphorus (%)	1.20	1.28
Sodium (%)	0.50	0.53
Potassium (%)	0.80	0.86
Magnesium (%)	0.08	0.09
Chloride (%)	1.10	1.18
Sulphur (%)	0.60	0.64
Omega 6 (%)	2.00	2.14
Omega 3 (%)	0.60	0.64
Methionine (%)	1.10	1.18
Taurine (%)	0.35	0.37
Vitamin A*, IU	27000.0	28877.0
Vitamin D ₃ *, IU	1200.0	1283.4
Vitamin E* mg	450.0	481.3
Vitamin C* mg	350.0	374.3
Vitamin B ₁₂ * mg	0.58	0.62
Iron* mg	118.00	126.20
Iodine* mg	2.00	2.14
Copper* mg	12.00	12.83
Manganese* mg	55.00	58.82
Zinc* mg	148.00	158.29
Selenium* mg	0.15	0.16
Metabolisable energy** kcal	3820	4085
Digestibility (%)	86	

(Units per kg of product)

*Added
** Calculated



1. It is recommended that a veterinarian's opinion be sought before use. The feeding quantities shown are for guidance only and may vary depending on factors such as age, breed, activity and weather conditions. Store in a cool, dry place. Clean fresh water should be available in a clean bowl at all times.

affinity

ADVANCE

VETERINARY DIETS

RENAL

INDICATIONS

- Chronic Kidney Disease (CKD)
- Renal failure
- Calcium oxalate urolithiasis
- Early stages of congestive heart failure
- Hypertension
- Liver disease associated with encephalopathy

CONTRAINDICATIONS

- Growing kittens
- Pregnancy
- Lactation
- Conditions that require a high consumption of proteins or phosphorous



**REDUCED PROTEIN LEVELS:
REDUCES THE WORKLOAD OF
THE KIDNEYS**



**DELAYS THE
PROGRESSION OF
KIDNEY FAILURE**



pH CONTROL

FEATURES AND BENEFITS



affinity

ADVANCE

VETERINARY DIETS

RENAL

INGREDIENTS

Rice, corn, maize protein, animal fat (stabilised with a mix of tocopherols of natural origin), dehydrated pork proteins, dehydrated egg, soybean protein, beet pulp, hydrolysed animal proteins, sweet whey powder, dehydrated salmon proteins, calcium carbonate, fish oil, caseinate, potassium chloride, inulin, potassium citrate. Sources of proteins: maize protein, dehydrated pork proteins, dehydrated egg, soybean protein, hydrolysed animal proteins, sweet whey powder, dehydrated salmon proteins caseinate.

DAILY RATION¹

ADULT WEIGHT	g/DAY
2-4 kg	40-65 g
4-6 kg	65-85 g
6-8 kg	85-100 g

LOGISTICS DATA

CODE	UNITS/BOX	SIZE	EAN
598211	8	1.5 kg	8410650152448



NUTRITIONAL ANALYSIS

	Quantity	Dry matter
Moisture (%)	5.0	-
Protein (%)	25.0	26.3
Fat (%)	17.0	17.9
Crude fibre (%)	2.5	2.6
Crude ash (%)	5.3	5.6
Calcium (%)	0.65	0.68
Phosphorus (%)	0.45	0.47
Sodium (%)	0.20	0.21
Potassium (%)	1.00	1.05
Magnesium (%)	0.09	0.09
Chloride (%)	0.77	0.81
Sulphur (%)	0.25	0.26
Omega 6 (%)	2.90	3.05
Omega 3 (%)	0.70	0.74
Methionine (%)	0.55	0.58
Tryptophan (%)	0.20	0.21
Taurine (%)	0.20	0.21
Vitamin A*, IU	27000	28421
Vitamin D ₃ *, IU	600	632
Vitamin E*, mg	785	826
Iron*, mg	146.00	153.68
Iodine*, mg	1.70	1.79
Copper, mg	17.00	17.89
Manganese*, mg	47.00	49.47
Zinc*, mg	148.00	155.79
Selenium*, mg	0.10	0.11
Metabolizable energy**, kcal	4070	4285
Digestibility (%)		87
RSS Struvite		>3
RSS Oxalate		<5
Urinary pH		7.4

(Units per kg of product)

* Added
** Calculated

1. It is recommended that a veterinarian's opinion be sought before use. The feeding quantities shown are for guidance only and may vary depending on factors such as age, breed, activity and weather conditions. Store in a cool, dry place. Clean fresh water should be available in a clean bowl at all times.

affinity

ADVANCE

VETERINARY DIETS

URINARY

INDICATIONS

- Pathologies associated with diseases of the urinary tract in cats
- Dissolution of struvite stones
- Reduction in the recurrence of stones formed by struvite and oxalate crystals.
- Idiopathic cystitis

CONTRAINDICATIONS

- Growing kittens
- Pregnancy
- Lactation
- Recurrent use of urine acidifiers
- Chronic kidney disease
- Cardiovascular disease
- Metabolic acidosis
- Hypertension



**CRYSTALLISATION
INHIBITORS**

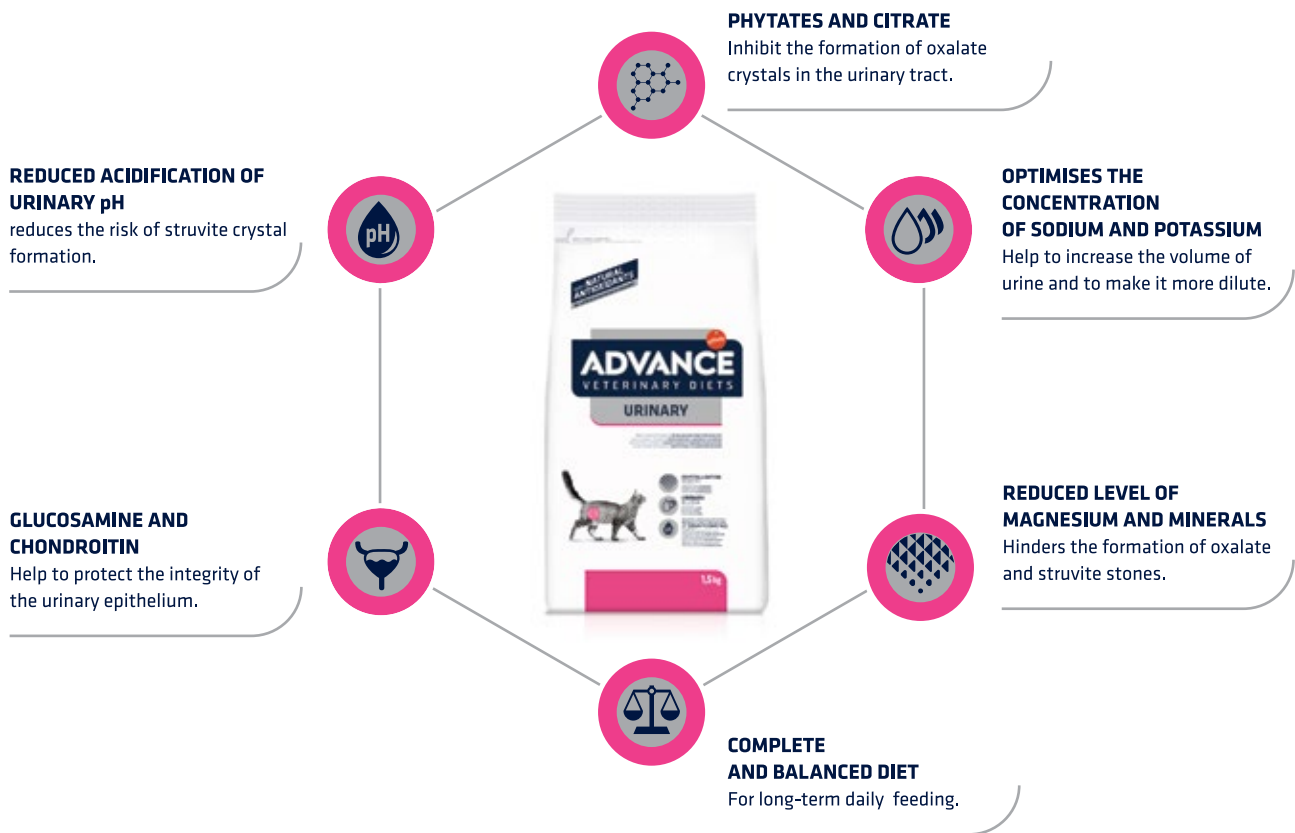


**DILUTES
THE URINE**



**REDUCES THE FORMATION
OF STRUVITE CRYSTALS**

FEATURES AND BENEFITS



affinity

ADVANCE

VETERINARY DIETS

URINARY

INGREDIENTS

Chicken, maize protein, wheat, rice, dehydrated poultry proteins, dehydrated pork proteins, maize meal, fat of animal origin, hydrolysed animal proteins, fish oil, salt, potassium chloride, calcium sulphate, potassium citrate, glucosamine (350 mg/kg), chondroitin sulphate (90 mg/kg).

DAILY RATION¹

ADULT WEIGHT	g/DAY
2-4 kg	40-65 g
4-6 kg	65-85 g
6-8 kg	85-105 g

LOGISTICS DATA

CODE	UNITS/BOX	SIZE	EAN
596211	8	1.5 kg	8410650152400
500982	5	3 kg	8410650009827
596710	1	8 kg	8410650168074



NUTRITIONAL ANALYSIS

	Quantity	Dry matter
Moisture (%)	5.0	-
Protein (%)	35.0	36.8
Fat (%)	14.0	14.7
Crude fibre (%)	1.5	1.6
Crude ash (%)	6.5	6.8
Calcium (%)	0.90	0.95
Phosphorus (%)	0.70	0.74
Sodium (%)	0.70	0.74
Potassium (%)	0.90	0.95
Magnesium (%)	0.07	0.07
Chloride (%)	1.90	2.00
Sulphur (%)	0.60	0.63
Omega 6 (%)	2.20	2.32
Omega 3 (%)	0.50	0.53
Methionine (%)	1.10	1.16
Tryptophan (%)	0.25	0.26
Taurine (%)	0.15	0.16
Vitamin A*, IU	27000	28421
Vitamin E*, mg	450	474
Iron*, mg	86.00	90.53
Iodine*, mg	1.90	2.00
Copper, mg	15.00	15.79
Manganese*, mg	40.00	42.11
Zinc*, mg	148.00	155.79
Selenium*, mg	0.10	0.11
Glucosamine, mg	350.00	368.4
Chondroitin sulphate, mg	90.00	94.7
Metabolizable energy**, kcal	3995	4205
Digestibility (%)		88
RSS Struvite		<1
RSS Oxalate		<5
Urinary pH		6.1

(Units per kg of product)

*Added
** Calculated

1. It is recommended that a veterinarian's opinion be sought before use. The feeding quantities shown are for guidance only and may vary depending on factors such as age, breed, activity and weather conditions. Store in a cool, dry place. Clean fresh water should be available in a clean bowl at all times.

affinity

ADVANCE

VETERINARY DIETS

URINARY

STRESS

INDICATIONS

- Pathologies associated with diseases of the urinary tract in cats
- Dissolution of struvite stones
- Reduction in the recurrence of stones formed by struvite and oxalate crystals
- Idiopathic cystitis
- Nutritional support for stressful situations

CONTRAINDICATIONS

- Growing kittens
- Pregnancy
- Lactation
- Recurrent use of urine acidifiers
- Chronic kidney disease
- Cardiovascular disease
- Metabolic acidosis
- Hypertension



HELPS REDUCE
STRESS

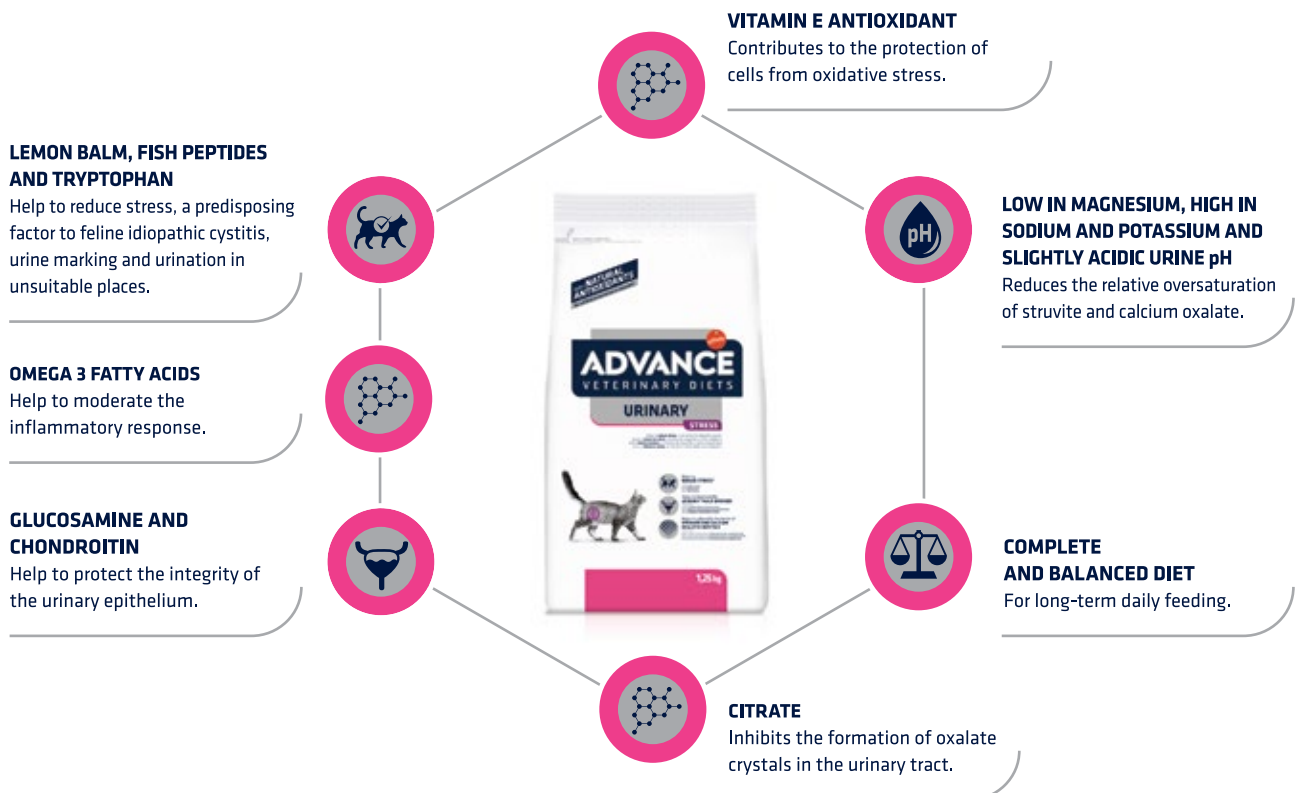


HELPS TO PROTECT
THE URINARY
BARRIER



HELPS REDUCE
THE FORMATION OF
URINARY CRYSTALS

FEATURES AND BENEFITS



affinity

ADVANCE

VETERINARY DIETS

URINARY

STRESS

INGREDIENTS

Chicken, rice, dehydrated poultry proteins, maize protein, maize meal, fat of animal origin, hydrolysed animal proteins, salt, potassium chloride, beet pulp, fish oil, fructo-oligosaccharides, fish peptides (0.09%), lemon balm extract (0.09%), melissa extract (0.09%), potassium citrate, glucosamine (350 mg/kg), chondroitin sulphate (90 mg/kg).

DAILY RATION¹

ADULT WEIGHT	g/DAY
2-4 kg	40-65 g
4-6 kg	65-85 g
6-8 kg	85-105 g

LOGISTICS DATA

CODE	UNITS/BOX	SIZE	EAN
923914	8	1.25 kg	8410650239149



NUTRITIONAL ANALYSIS

	Quantity	Dry matter
Moisture (%)	5.0	-
Protein (%)	34.0	35.8
Fat (%)	13.0	13.7
Crude fibre (%)	1.5	1.6
Crude ash (%)	7.5	7.9
Calcium (%)	0.90	0.95
Phosphorus (%)	0.85	0.89
Sodium (%)	0.80	0.84
Potassium (%)	1.00	1.05
Magnesium (%)	0.07	0.07
Chloride (%)	2.20	2.32
Sulphur (%)	0.50	0.53
Omega 6 (%)	2.20	2.32
Omega 3 (%)	0.40	0.42
Methionine (%)	1.00	1.05
Tryptophan (%)	0.35	0.37
Taurine (%)	0.20	0.21
Vitamin A*, IU	27000	28421
Vitamin D ₃ *, IU	1200	1263
Vitamin E*, mg	660	695
Iron, mg	86.00	90.53
Iodine*, mg	1.40	1.47
Copper, mg	16.00	16.84
Manganese*, mg	40.00	42.11
Zinc*, mg	148.00	155.79
Selenium*, mg	0.10	0.11
Glucosamine, mg	350.0	368.4
Chondroitin sulphate, mg	90.0	94.7
Metabolizable energy**, kcal	3910	4116
Digestibility (%)		87
RSS Struvite		<1
RSS Oxalate		<5
Urinary pH		6.0

(Units per kg of product)

* Added
** Calculated

1. It is recommended that a veterinarian's opinion be sought before use. The feeding quantities shown are for guidance only and may vary depending on factors such as age, breed, activity and weather conditions. Store in a cool, dry place. Clean fresh water should be available in a clean bowl at all times.

STERILIZED - LOW CALORIE

INDICATIONS

- Pathologies associated with diseases of the urinary tract in cats
- Dissolution of struvite stones
- Reduction in the recurrence of stones formed by struvite and oxalate crystals
- Idiopathic cystitis
- Sterilised cats with a tendency to excessive body weight and urinary problems

CONTRAINDICATIONS

- Growing kittens
- Pregnancy
- Lactation
- Recurrent use of urine acidifiers.
- Chronic kidney disease
- Cardiovascular disease
- Metabolic acidosis
- Hypertension



HELPS TO
CONTROL WEIGHT



HELPS TO PROTECT
THE URINARY
BARRIER



HELPS REDUCE
THE FORMATION OF
URINARY CRYSTALS

FEATURES AND BENEFITS



affinity

ADVANCE

VETERINARY DIETS

URINARY

STERILIZED - LOW CALORIE

INGREDIENTS

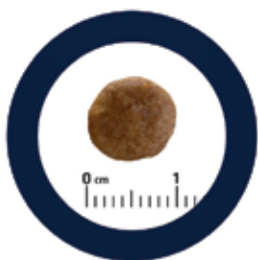
Chicken, maize protein, dehydrated poultry proteins, maize meal, vegetable fibre, corn, wheat, dehydrated pork proteins, wheat protein, hydrolysed animal proteins, fat of animal origin, salt, potassium chloride, fish oil, monocalcium phosphate, potassium citrate, glucosamine (350 mg/kg), chondroitin sulphate (90 mg/kg).

DAILY RATION¹

ADULT WEIGHT	g/DAY
2-4 kg	35-50 g
4-6 kg	50-70 g
6-8 kg	70-85 g

LOGISTICS DATA

CODE	UNITS/ BOX	SIZE	EAN
923984	8	1.25 kg	8410650239842
923985	5	2.5 kg	8410650239859
924021	1	7.5 kg	8410650240213



NUTRITIONAL ANALYSIS

	Quantity	Dry matter
Moisture (%)	5.0	-
Protein (%)	35.0	36.8
Fat (%)	11.0	11.6
Crude fibre (%)	8.5	8.9
Crude ash (%)	7.5	7.9
Calcium (%)	0.90	0.95
Phosphorus (%)	0.85	0.89
Sodium (%)	0.90	0.95
Potassium (%)	0.90	0.95
Magnesium (%)	0.07	0.07
Chloride (%)	2.20	2.32
Sulphur (%)	0.45	0.47
Omega 6 (%)	1.80	1.89
Omega 3 (%)	0.35	0.37
Methionine (%)	1.00	1.05
Tryptophan (%)	0.35	0.37
Taurine (%)	0.15	0.16
Vitamin A*, IU	27000	28421
Vitamin D ₃ *, IU	1200	1263
Vitamin E*, mg	965	1016
Iron, mg	86.00	90.53
Iodine*, mg	1.40	1.47
Copper, mg	13.00	13.68
Manganese*, mg	40.00	42.11
Zinc*, mg	148.00	155.79
Selenium*, mg	0.10	0.11
Glucosamine, mg	350.0	368.4
Chondroitin sulphate, mg	90.0	94.7
Metabolizable energy**, kcal	3515	3700
Digestibility (%)		85
RSS Struvite		>3
RSS Oxalate		<5
Urinary pH		7.4

(Units per kg of product)

* Added
** Calculated

1. It is recommended that a veterinarian's opinion be sought before use. The feeding quantities shown are for guidance only and may vary depending on factors such as age, breed, activity and weather conditions. Store in a cool, dry place. Clean fresh water should be available in a clean bowl at all times.



scientific
remedies

Scientific Remedies Pvt. Ltd.

1, Cosmic Enclave, Opp. SBI Bank, Sama, Vadodara (Gujarat), India.

For product related queries, please contact:

Contact No. : 1800 2585 787 | Email : customer@srplmail.com

www.scientificremediesindia.com